

John Beecher

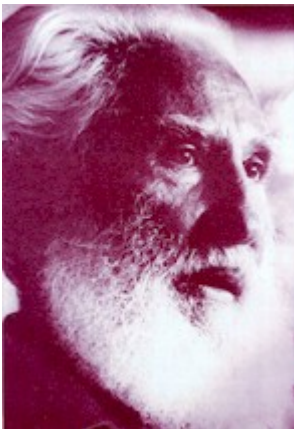
Poet Description:

John Beecher was born in New York, the great-great-nephew of Abolitionists Harriet Beecher Stowe and Henry Ward Beecher; it was a heritage his life would honor. He grew up in Birmingham, Alabama, where his father was a U.S. Steel executive, but Beecher entered the industry at the bottom. From age 16, he worked twelve-hour shifts on the open hearth furnaces. Educated at Cornell, Alabama, Harvard, and North Carolina, Beecher worked eight years during the New Deal era as a field administrator of social programs devoted to sharecroppers and migrant workers. He then took up a teaching career. But when he refused to sign California's unconstitutional "loyalty" oath in 1950, he was fired and blacklisted. He began ranching in the redwoods, and, along with his wife Barbara, founded a press to publish himself and other blacklisted writers. During the civil rights movement he became a Southern correspondent for *Ramparts* and the *San Francisco Chronicle*. In 1977, nearly 30 years after being fired, he was reappointed to the San Francisco State University faculty. See his *Collected Poems 1924-1974* (1974).

Race/Ethnicity:

[European](#) ^[1]

Picture:



Gender:

[Male](#) ^[2]

Sexuality:

[Straight](#) ^[3]

First Name:

John

Last Name:

Beecher

Birth & Death Dates:

Friday, January 22, 1904 to Sunday, May 11, 1980

School of Poetry:

[Other](#) ^[4]

Birth Place:

New York City , New York

United States

See map: [Google Maps](#) ^[5]

New York US

Group visibility:

Private - accessible only to group members

Source URL: <http://modernamericanpoetry.org/poet/john-beecher>

Links

[1] <http://modernamericanpoetry.org/category/race-ethnicity/european>

[2] <http://modernamericanpoetry.org/category/gender/male>

[3] <http://modernamericanpoetry.org/category/sexuality/straight>

[4] <http://modernamericanpoetry.org/school-poetry/other>

[5] [http://maps.google.com?q=46.880607+-](http://maps.google.com?q=46.880607+-87.363281+%28%2C+New+York+City%2C+NY%2C+%2C+us%29)

[87.363281+%28%2C+New+York+City%2C+NY%2C+%2C+us%29](http://maps.google.com?q=46.880607+-87.363281+%28%2C+New+York+City%2C+NY%2C+%2C+us%29)